

# APPENDIX E: COMMUNITY MEETINGS

---

## Agenda Public Meeting #1

April 6, 2006  
6:00 PM – 8:00 PM

- I. Introductions .....Mayor Jim Proctor, Town of Lake Lure
- II. Project Overview..... LandDesign
  - a. Purpose of the Plan
  - b. Issues and Opportunities
  - c. Preliminary Survey Results
  - d. Vision Goals and Objectives
- BREAK**
- III. Q & A ..... LandDesign
- IV. Next Steps ..... LandDesign
- V. Closing Remarks .....Mayor Pro Tem Dick McCallum, Town of Lake Lure

Draft Vision Statement:

**“Lake Lure, the gem of the Carolinas, is a mountain lake community that has a harmonious balance of the interests of our citizens, businesses and visitors, achieved through open communication and managed growth that emphasizes fiscal responsibility and stewardship of our natural beauty and environment.”**

*-- created by Lake Lure Strategic Steering Planning Committee, modified by Comprehensive Plan Steering Committee*

### Contact Information

Shannon Baldwin, AICP/NCAZO  
Email: CDD@TownofLakeLure.com  
Town of Lake Lure  
PO Box 255  
Lake Lure, NC 28746  
Phone: 828-625-8893 ext. 107  
Fax: 828-625-8371

**Agenda  
Public Meeting #2**

July 12, 2006  
5:00 PM – 8:00 PM

**Open House - 5:00 – 6:00 pm**

**I. Maps and Preliminary Concept Plans on Display**

**Community Meeting - 6:00 – 8:00 pm**

**II. Welcome.....Shannon Baldwin, Town of Lake Lure**

**III. Presentation..... LandDesign**

- a. **Project Schedule**
- b. **Public Meeting #1 Review**
- c. **Final Survey Results (major findings)**
- d. **Plan Framework**
- e. **Draft Concept Plan Overview**

**IV. Workshop..... All**

**BREAK**

**V. Workshop Summary..... All**

**VI. Discussion..... All**

**VII. Next Steps ..... LandDesign**

**VIII. Closing Remarks .....Shannon Baldwin, Town of Lake Lure**



**Figure 13 - Town Center**

This is only a design study. It is one of 100 or more ways to interpret the policies in the plan, and shows how such policies might be manifested in future development / redevelopment.



Figure 14 - Mixed-Use Node

This is only a design study. It is one of 100 or more ways to interpret the policies in the plan, and shows how such policies might be manifested in future development / redevelopment.

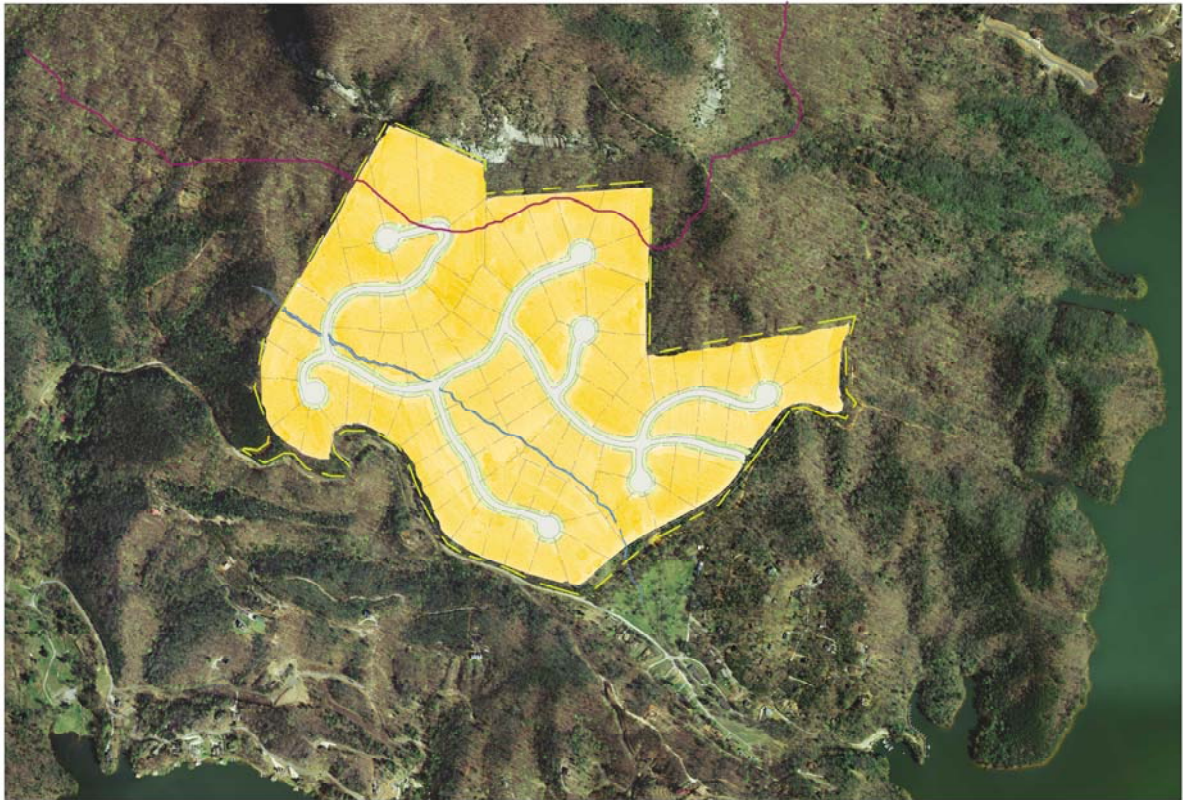


Figure 15 - Residential Development (Conservation and Conventional Neighborhoods)

**Agenda**  
**Public Meeting #3**  
October 10, 2006  
4:00 PM – 6:00 PM

**Community Meeting - 4:00 – 6:00 pm**

- I. Welcome..... Representative of Lake Lure**
- II. Presentation..... LandDesign**
  - f. Public Meeting #2 Review**
  - g. Discussion and Presentations of Recommendations**
- III. Break Out Session..... All**
- IV. Group Reports..... All**
- V. Next Steps ..... LandDesign**
- VI. Closing Remarks ..... Representative of Town of Lake Lure**